

# LIZARD EGG SHELLS FROM THE LOWER CRETACEOUS OF CUENCA PROVINCE, SPAIN

by ROLF KOHRING

**ABSTRACT.** The Lower Cretaceous vertebrate-bearing coaly marls and limestones of Uña (Province of Cuenca, Spain) have yielded fragmentary reptilian egg shells. The shell is of gekkonid microstructure type, and thus they can be confidently assigned to the lizards. These fragments represent the oldest known gekko-like egg shells.

**FOSSIL** egg shells have been reported nearly worldwide, especially from Upper Cretaceous and Tertiary deposits, and they have been assigned, according to their microstructure and biomineralization, to turtles, crocodiles, dinosaurs, and birds (reviewed by Hirsch and Packard 1987). Fossilized egg shells of snakes and lizards, however, are only rarely described, owing to their largely non-mineralized composition; nearly all squamates produce eggs with soft shells consisting of interlacing protein fibrils and some calcareous matter, probably homologous to the membrana testacea of avian eggs (Schleich and Kästle 1988). Only the recent gekkonids (Lacertilia) develop calcified (and thus fossilizable) rigid egg shells, characterized by a continuous layer, composed of tightly abutted jagged columns, and surface nodes. The thickness of both fossil and recent gekkonid egg shells ranges from 35 to 280  $\mu\text{m}$  (Schleich and Kästle 1988).

Fossil gekko-like egg shells are reported from the Lower Miocene of Kenya (Hirsch and Harris 1989), the Oligocene of the Mainz Basin (Schleich and Kästle 1988), the Lower Eocene of Wyoming (Hirsch and Packard 1987), the Cretaceous/Tertiary-boundary of Peru (Hirsch in Mourier *et al.* 1988), the Upper Cretaceous of both Montana (Hirsch and Quinn, in press) and India (Sahni *et al.* 1984), and the Lower Cretaceous of Mongolia (Alifanov 1989). One genus (*Ilerdaesaurus* sp.) of this material is under study by A. Richter (Berlin). According to Hoffstetter (1964) gekkonids are known since the Upper Jurassic. The lizards of Uña are not yet described (Krebs, pers. comm.)

## LOCALITY AND STRATIGRAPHY

The coal-bearing marls and limestones of Uña (province of Cuenca, Spain) have yielded tetrapods, especially frogs (Fey 1988), turtles and lizards (Krebs, pers. comm.), crocodiles (Brinkmann 1989), and early mammals (Henkel and Krebs 1969). They have been dated as Upper Barremian on the basis of palynomorphs (Mohr 1989), ostracodes, and charophytes (Schudack 1989). The palaeoenvironment of Uña is postulated to have been lacustrine, with marshy, deltaic deposits (Gierlowski-Kordesch and Janofske 1990). The egg shells described here are well preserved; only their margins are partially pyritized, as is typical also for the gastropods, ostracodes, and charophytes of Uña.

## THE MATERIAL

### *Description*

In all, eight tiny, dark brown coloured shell fragments (5  $\times$  10 mm), embedded in the coaly sediment, have been studied in thin sections and by scanning electron microscopy (SEM, Cambridge Stereoscan 360). In thin section, the egg shells display a continuous layer with hardly visible fine, closely spaced growth-stage lines and a light coloured secondary layer in the outer part, which is obviously a diagenetic structure (Hirsch, pers.

comm.) (Pl. 1, fig. 5). It is never pyritized in any of the specimens. In XPL an extinction pattern with cone-shaped wedges in the upper part of the primary layer and partially in the secondary layer is visible.

In SEM studies, some further morphological features can be observed. The shell consists of a nearly complete homogenous calcitic layer without recognizable shell units (Pl. 1, figs 2 and 6), and therefore is very similar to the recent gekko *Ptyodactylus* (Schleich and Kästle 1988). In its upper part, the 20  $\mu\text{m}$  thick secondary layer with horizontal crystallites is visible (Pl. 1, fig. 4). This characteristic structure has been mentioned also from Upper Cretaceous gekko-like egg shells of Montana (Hirsch and Quinn, in press) and from hadrosaurian egg shells (Hirsch and Packard 1987). The surface is covered with a thin 3  $\mu\text{m}$  mineralized layer, as is typical for nearly all recent gekkos (Schleich & Kästle 1988). However, this layer has never been reported from fossil lizard eggs. The shell thickness, including surface nodes, is 170–180  $\mu\text{m}$ . The diameter of these nodes is about 100  $\mu\text{m}$  (Pl. 1, fig. 1).

### Discussion

Other distinctive reptilian egg shell microstructures, such as pores, pore openings, and basal aragonitic mammillae could not be found. Probably the rigid gekkonid egg shell is not homologous to those of other reptiles or birds.

The remarkable structural similarities to modern gekkonid egg shells allow the assignment of the Uña material to the lizards. These late Barremian fragments are the oldest known certain lizard egg shells. Due to the poor knowledge of the problematic diagenetic pattern of egg shells an identification of the very thin outer layer as a mineralized organic cover seems hitherto impossible. The fragmentation of the shells suggests substantial transport. The primary shapes and sizes of the eggs cannot be reconstructed.

A single thin-shelled (about 50  $\mu\text{m}$ ) fragment is known from the Upper Jurassic (Kimmeridgian) coaly marls and limestones of Guimarota (Central Portugal), where turtle egg shells have been described (Kohring 1990). It is similar in microstructure to recent gekkonid egg shells, but its real taxonomic position is uncertain (Pl. 1, fig. 8).

*Acknowledgements.* I thank Professor B. Krebs (Berlin) for material and information on Uña, and Dr K. F. Hirsch (Denver) for useful remarks. The field work was supported from the Deutsche Forschungsgemeinschaft (DFG). My sincere thanks go to Miss H. Bosbach (Berlin) for reading the typescript critically, to Dr J. Reitner (Berlin) for providing me with recent lizard egg shells, and to Dr D. Martill (Milton Keynes) and Dr M. J. Benton (Bristol) for useful comments.

### REFERENCES

- ALIFANOV, V. R. 1989. The oldest gekko (Lacertilia, Gekkonidae) from the Lower Cretaceous of Mongolia. *Paleontological Journal* **23**, 128–131.
- BRINKMANN, W. 1989. Vorläufige Mitteilung über die Krokodilier-Faunen aus dem Ober-Jura (Kimmeridgium) der Kohlegrube Guimarota, bei Leiria (Portugal) und der Unter-Kreide (Barremium) von Uña (Provinz Cuenca, Spanien). *Documenta naturae* **56**, 1–26.

### EXPLANATION OF PLATE I

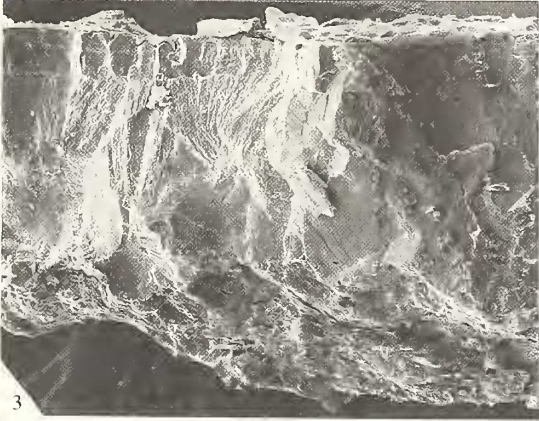
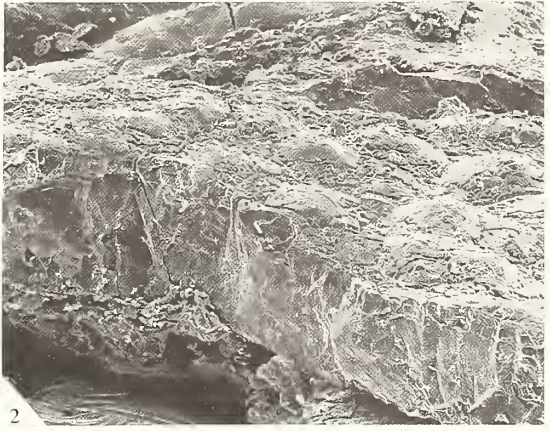
Figs 1–6. Lizard egg shell fragments from the Lower Cretaceous of Uña. 1, outer surface with nodes,  $\times 50$ . 2, lateral view with homogenous calcitic layer, secondary layer, outside is up,  $\times 100$ . 3, lateral view, note secondary layer,  $\times 200$ . 4, Secondary layer,  $\times 400$ . 5, lateral view in thin section in ordinary light, outside with a secondary layer is up, note pyritized margins,  $\times 50$ . 6, lateral view,  $\times 80$ .

Fig. 7. Recent gekko egg shell, *Tarentola* sp., lateral view with nodose outer surface,  $\times 300$ .

Fig. 8. Uncertain gekko-like egg shell from the Upper Jurassic of Guimarota, lateral view,  $\times 300$ .

Specimens are housed in the Institut für Paläontologie, Freie Universität Berlin under the registered numbers Un Bar ES 1–8.





KOHRING, lizard egg shells

- FEY, B. 1988. Die Anurenfauna aus der Unterkreide von Uña (Ostspanien). *Berliner geowissenschaftliche Abhandlungen A* **103**, 1–125.
- GIERLOWSKI-KORDESCH, E. and JANOFSKE, D. 1990. Paleoenvironmental reconstruction of the Weald around Uña (Serranía de Cuenca, Cuenca Province, Spain). In WIEDMANN, J. (ed.). *Cretaceous of the Western Tethys*. Proceedings 3rd International Cretaceous Symposium, Tübingen 1987, Schweizerbart, Stuttgart.
- HENKEL, S. and KREBS, B. 1969. Zwei Säugetier-Unterkiefer aus der Unteren Kreide von Uña (Provinz Cuenca, Spanien). *Neues Jahrbuch für Geologie und Paläontologie, Monatshefte*, **1969**, 449–463.
- HIRSCH, K. F. and HARRIS, J. 1989. Fossil eggs from the Lower Miocene Legetet Formation of Koru, Kenya: snail or lizard? *Historical Biology*, **3**, 61–78.
- and PACKARD, M. J. 1987. Review of fossil eggs and their shell structure. *Scanning Microscopy*, **1**, 383–400.
- and QUINN, B. In press. Eggs and eggshell fragments from the Upper Cretaceous Two Medicine Formation of Montana. *Journal of Vertebrate Paleontology*.
- HOFFSTETTER, R. 1964. Les Sauria du Jurassique supérieur et spécialement les Gekkota de Bavière et de Mandchourie. *Senckenbergiana Biologica*, **45**, 281–324.
- KOHRING, R. 1990. Upper Jurassic chelonian eggshell fragments from the Guimarota Coalmine (Central Portugal). *Journal of Vertebrate Paleontology*, **10**, 128–130.
- MOHR, B. 1989. New palynological information on the age and environment of Late Jurassic and Early Cretaceous vertebrate localities of the Iberian Peninsula (eastern Spain and Portugal). *Berliner geowissenschaftliche Abhandlungen A*, **106**, 291–301.
- MOURIER, TH., BENGTON, P., BONHOMME, M., BUGÉ, E., CAPPETTA, H., CROCHET, J.-Y., FEIST, M., HIRSCH, K. F., JAILLARD, E., LAUBACHER, G., LEFRANC, J. P., MOULLADE, M., NOBLET, C., PONS, D., REY, J., SIGE, B., TAMBAREAU, Y. and TAQUET, P. 1988. The Upper Cretaceous–Lower Tertiary marine to continental transition in the Bagua basin, northern Peru. Paleontology, biostratigraphy, radiometry, correlations. *Newsletters on Stratigraphy*, **19**, 143–177.
- SAHNI, A., RANA, R. S. and PRASAD, G. V. R. 1984. SEM studies of thin egg shell fragments from the Intertrappeans (Cretaceous–Tertiary Transition) of Nagpur and Asifabad, peninsular India. *Journal of the Paleontological Society of India*, **29**, 26–33.
- SCHLEICH, H. H. and KÄSTLE, W. 1988. *Reptile egg-shells*. Gustav Fischer Verlag, Stuttgart, 123 pp.
- SCHUDACK, M. 1989. Charophytenfloren aus den unterkretazischen Vertebraten-Fundschichten bei Galve und Uña (Ostspanien). *Berliner geowissenschaftliche Abhandlungen A*, **106**, 409–443.

R. KOHRING

Institut für Paläontologie  
Freie Universität Berlin

Schwendenerstrasse 8, 1000 Berlin 33, Germany

Manuscript received 18 January 1990.

Revised manuscript received 25 April 1990